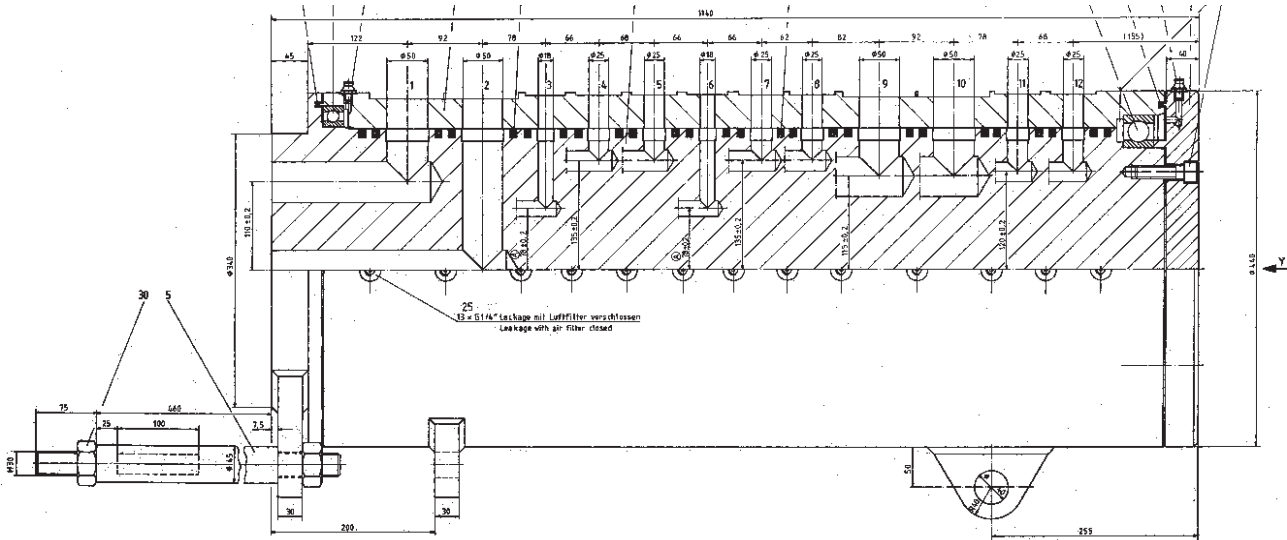


Sonderdrehdurchführung, 12 Kanäle Special Rotary Distributor, 12 Channels

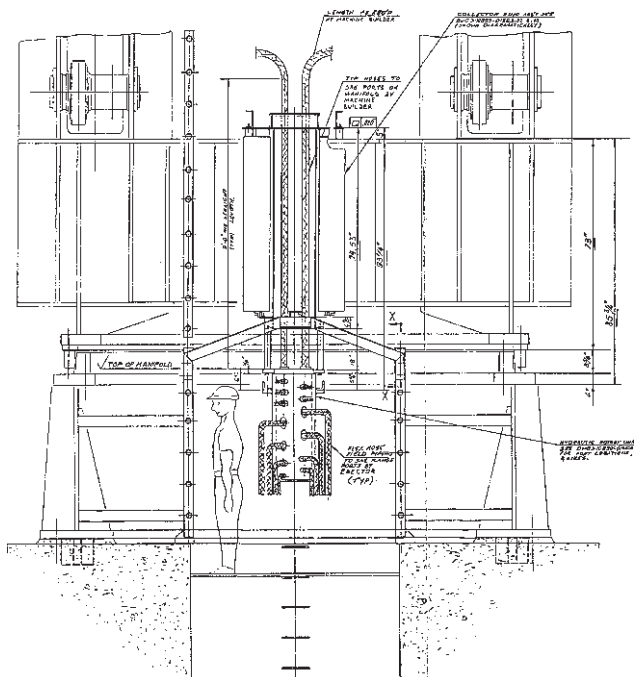


Betriebsmedium / Druck:

- Wasser-Glycol: 210 bar
- Argon: 210 bar
- Luft: 210 bar

Anwendungsfall

Drehdurchführung für einen Pfannendrehurm in einer Brammenstranggießanlage für Firma SMS Concast in USA.



Media / Pressure:

- Water-Glycol: 210 bar
- Argon: 210 bar
- Air: 210 bar

Application

Rotary distributor for a ladle turret used in a continuous slab casting plant for company SMS Concast in USA.